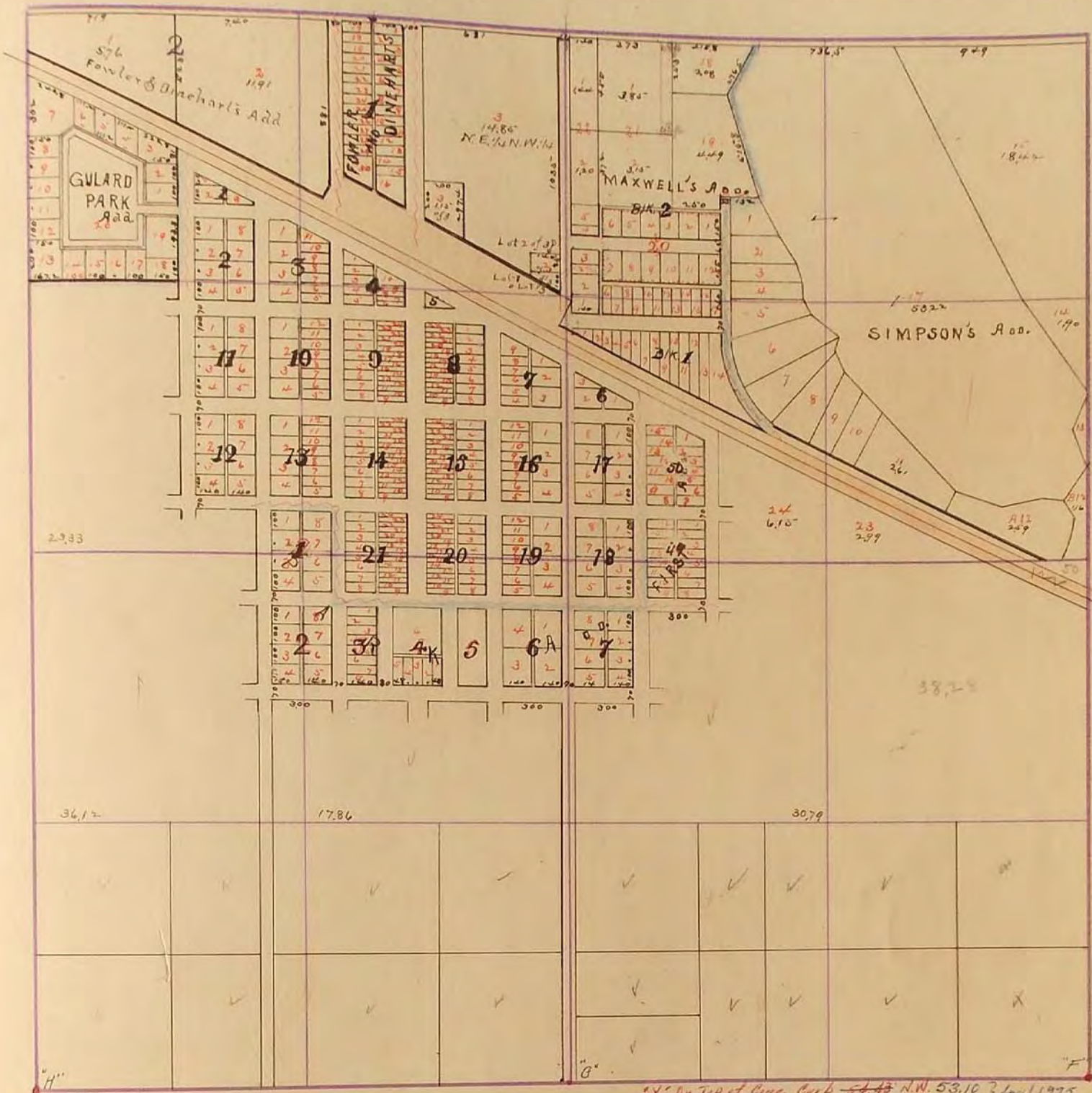


MURRAY COUNTY.

Section *13*
 10785 McGill-Warner Co., Blank Book Manufacturers, St. Paul.

Township *106*

Range *41*



*X On Top of Conc. Curb ~~54.43~~ N.W. 53.10 April 1975
 X On Top of Conc. Curb ~~55.40~~ N.E. 55.40 April 1975

"G" Found Lime stone + Oak stake Placed Concrete stone on Top: R.P. Tack in Blazed Elm N.E. 60.5'; R.P. X in sidewalk N.W. 39.6'; R.P. Tack in Blazed Maple Tree S.E. 41.6'

"H" Found stone Placed Concrete Stone on Top: R.P. Edge of Concrete post North 32.6' East edge of Post: R.P. Tack in Blazed Ash N.E. 32.9'; R.P. Tack in Light pole S.W. 36.6'

"H" Found Conc. Stone with a blazed "X" on Top: F.A. March 1934 East Edge - South side of Conc. Post 52.58' North N.E. in PP. S.W. 59.85, N.E. in Ash Tree N.E. 39.63'

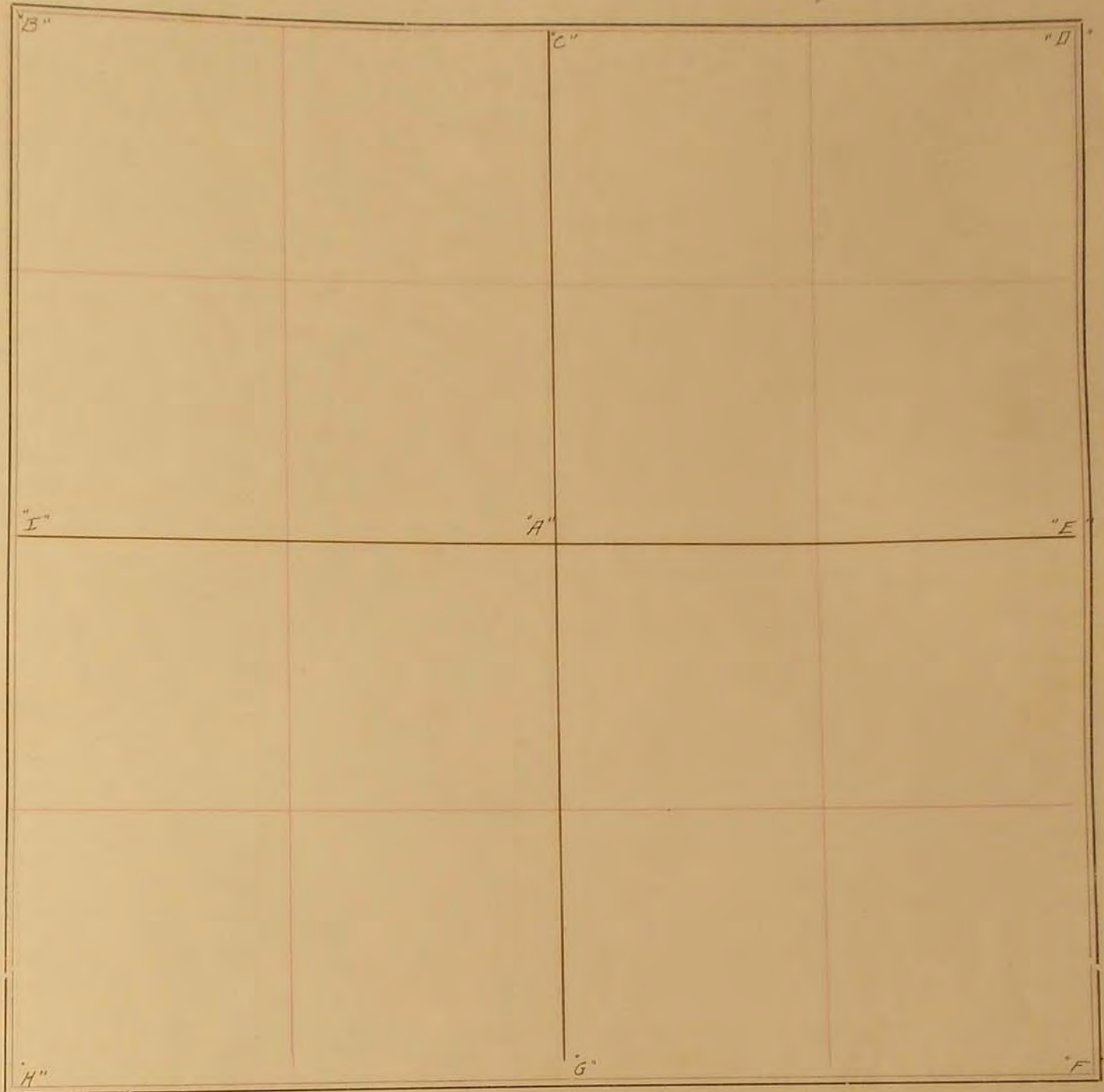
"F" Found fieldstone Southeast corner corporate limit of Slayton April 6, 1970: R.P. N&C Wood fence post NW. 33.0' (cap near ground level); R.P. Base of steel Con Post North (Painted red) 29.1'; R.P. Steel pin @ intersection CSAH #7 & CSAH 33 South 23.8'

"H" Conc. Stone: N&C in Evergreen N.N.E. 64.35'; 1x2" hub in Yard N.E. 66.85'

- 14
- 15
- 16
- 17
- 18
- 19
- 20
- 21
- 22
- 23
- 24
- 25
- 26
- 27
- 28
- 29
- 30
- 31
- 32
- 33
- 34
- 35
- 36

SURVEY No. _____

Section 15 Town 106 Range 41



FIELD NOTES.

"G" Found Lime Stone with + on Top of Gov Stake. Placed Concrete Stone on top of both. R.P. Tack in Blazed Elm N.E. 60⁵': R.P.X in side walk N.W. 39⁶': R.P. Tack in Blazed Maple Tree S.E. 41⁶'

"H" Found Stone Placed Concrete Stone" R.P. East Edge of concrete Cor. post North 32⁶': R.P. Tack in Blazed Ash N.E. 32²': R.P. Tack in Light pole S.W. 36⁶'

Aug 21, 1934 F.A. March